

LDD Manager

Help & Reference

Applicable for LDD Mgr	0.99
Applicable for LDD	4.2.5
Date	January 2012
By	Johan (aka Superkalle)

Introduction

About LDD Manager

LDD Manager is a tool to view, manage and analyze Lego Digital Designer LXF-files. It's freeware and was developed by a Lego-fan for Lego-fans. Please don't rip the data in the application. It took me a long time to gather and compile. If you have any suggestions or questions, drop me a line at: [sjohan10\[AT\]hotmail.com](mailto:sjohan10[AT]hotmail.com)

System requirements

LDD Manager was developed with Microsoft Access and requires Access 2002, 2003 or 2007 installed on your PC. If you don't have either of these, read in the installation section below to download and install the free Access 2003 Runtime.

Sorry, no Mac version available. Also LDD Manager will not run on Office 64 bit.

Installation/Upgrading

- ☐ Step 1. Make sure you have Access 2002, 2003, 2007 or 2010 (32-bit) installed on your PC. NOTE: If you don't have either, you first need to install the free Access 2003 Runtime. [Download here](#)
- ☐ Step 2. Unzip the content of the LDDManager.zip to any folder. NOTE: If you have Access 2007: for LDDManager to work you may need to add the folder where you placed it to "Trusted Locations". [Read here how to do that](#)
- ☐ Step 3. Start LDD Manager by double-clicking StartLDDManager.vbs

IMPORTANT: For LDD Manager to work, LDD Manager must have security permission to be able to write to the folder where it is placed

Uninstall

To uninstall, just delete the files.

Latest version

Latest version of LDD Manager and this help file can be found [here](#)

To upgrade LDD Manager, replace the current files. Note that all previous imported models files will lost, but hopefully it's not too much work to import them again.

Disclaimer

This software is free for personal, non-commercial use. Copyright by the author. LEGO® and Lego Digital Designer are registered trademarks of the LEGO® Group which does not sponsor, authorize or endorse this software. This software is not sponsored or endorsed by BrickLink.com

Release history

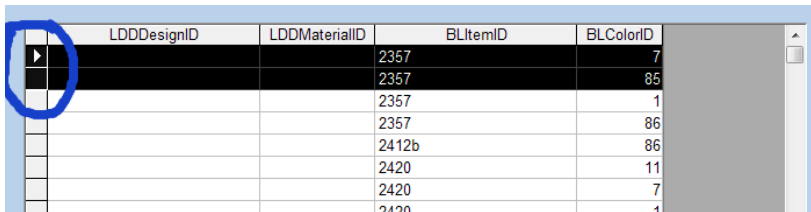
See end of this document

General sorting, and filtering functions

Before going in to the features of LDD Manager, here is an overview of some general features that you can use in most lists throughout the program:

Select and delete an entire row

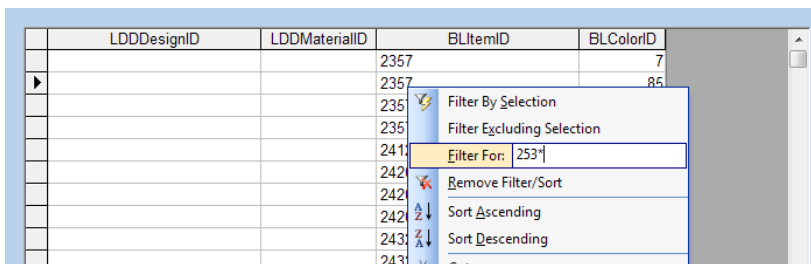
To delete one or more rows of data, click in the field to the left so that the rows become highlighted. Then press the Delete key.



	LDDDesignID	LDDMaterialID	BLItemID	BLCOLORID
▶			2357	7
▶			2357	85
▶			2357	1
▶			2357	86
▶			2412b	86
▶			2420	11
▶			2420	7
▶			2420	1

Search/Filter

To filter a list for a certain string, right click in the field you want to filter on. There you have several options. To filter for part of a string enter the string followed and/or preceded by *.

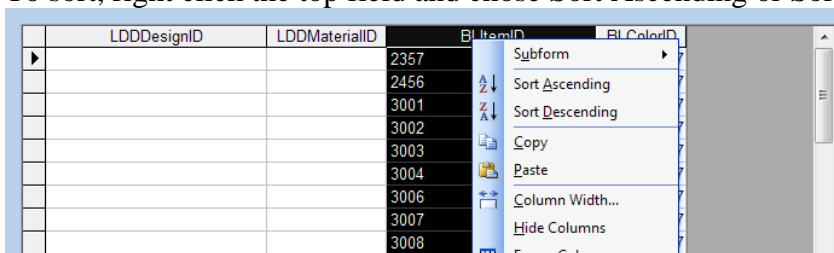


	LDDDesignID	LDDMaterialID	BLItemID	BLCOLORID
▶			2357	7
▶			2357	85
▶			2357	1
▶			2357	86
▶			2412b	86
▶			2420	11
▶			2420	7
▶			2420	1

- Filter By Selection
- Filter Excluding Selection
- Filter For: 2531
- Remove Filter/Sort
- Sort Ascending
- Sort Descending

Sort

To sort, right click the top field and chose Sort Ascending or Sort Descending



	LDDDesignID	LDDMaterialID	BLItemID	BLCOLORID
▶			2357	7
▶			2456	7
▶			3001	7
▶			3002	7
▶			3003	7
▶			3004	7
▶			3006	7
▶			3007	7
▶			3008	7

- Subform
- Sort Ascending
- Sort Descending
- Copy
- Paste
- Column Width...
- Hide Columns
- Freeze Columns

The main window

From the main window you reach all the functions in LDD Manager. The remainder of this help-file will go through and explain them one at a time.

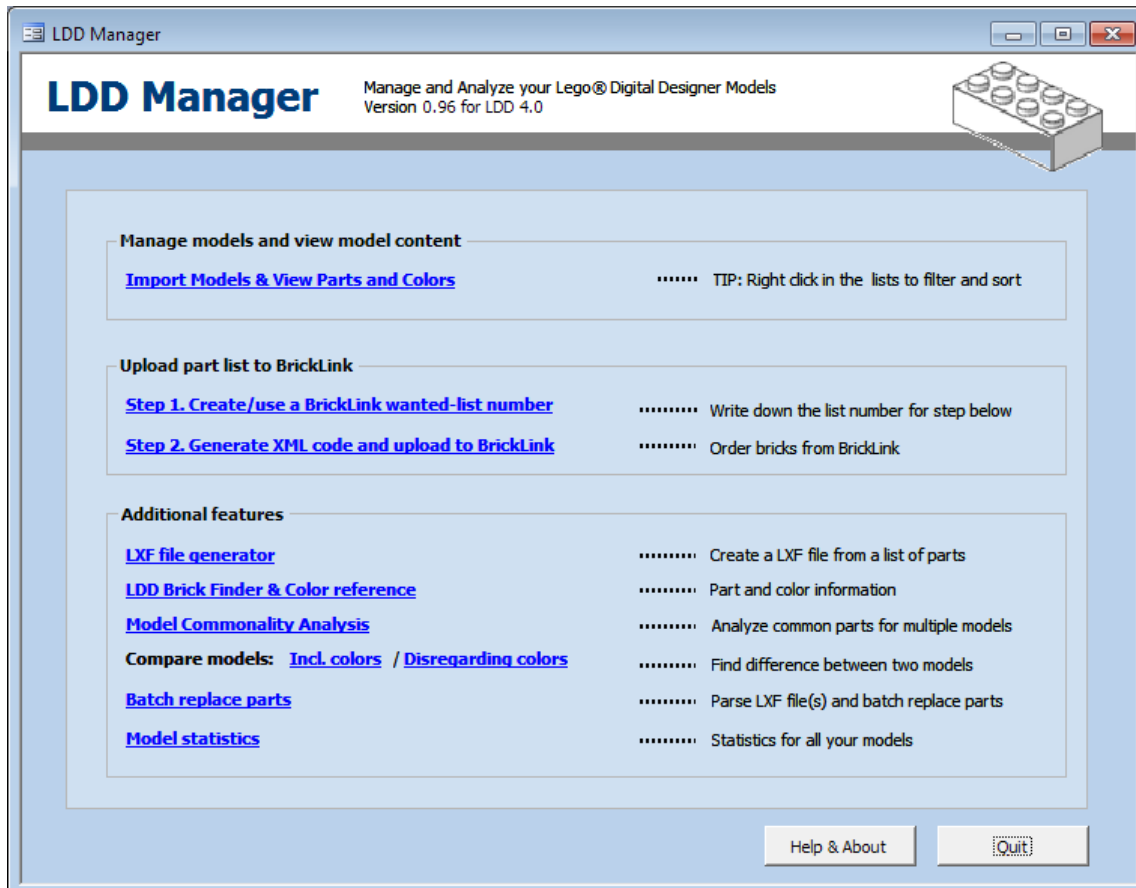


Figure 1 – LDD Manager Main Window

Import and view LDD-files

With this function you can import LXF-files into LDD Manager. During import, the LXF-file is parsed for all bricks, and LDD part numbers and colors are translated to BrickLink numbers. The reason for not keeping LDD part numbers is twofold:

- 1) BrickLink numbers allows for later upload of a parts list to BrickLink in case you want to order bricks.
- 2) By translating to BL numbers (and colors), it's possible to check if the bricks you've used has been manufactured in that particular color.

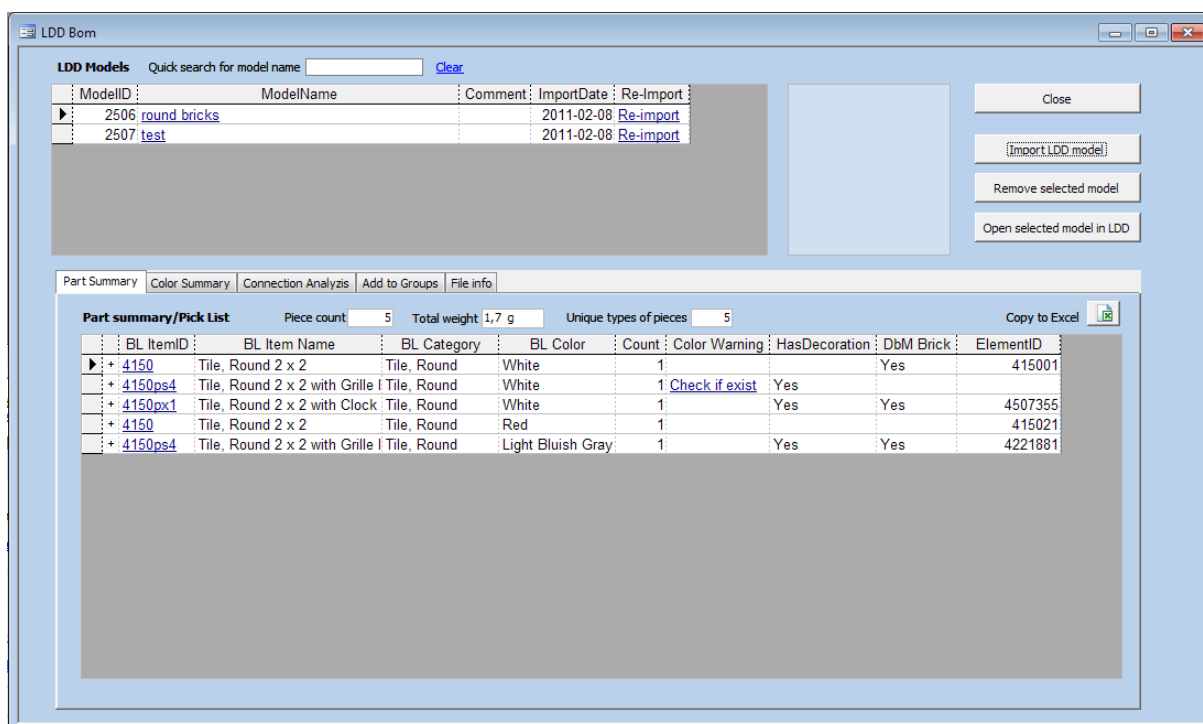


Figure 2 – Import and view LXF files

The window contains a Model list, and a number of tabs. In the Models list, please note that you can:

- ☐ Double click the Model Name to open the model in LDD
- ☐ Double click the Re-import text to re-import the model from LDD (if you made changes)

The Part Summary list contains the BOM (Bill of Material) for your LDD model:

- ☐ Click on the [+] sign to the left to see which colors the part exist in
- ☐ Double click the BrickLink Item ID to open a BrickLink window and view the part info.
- ☐ Use the Color Warning column to see if the part has been produced in that color. If it shows something, it means you must manually check it. Double click to go to BrickLink to view color availability for that brick.
- ☐ The Has Decoration column is what is says – it will you a “Yes” if the brick has a decoration applied
- ☐ The ElementID columns displays the ElementID, i.e. the unique LEGO number that identifies that brick design in that color.

Also note that you can also copy the entire Bill of Material to excel by clicking the Excel-button.

LDD Manager now supports bricks with decorations, but only if the decorations are placed and/or used like with the physical brick. For example, if a Minifig head has two faces (on each side), then you must add both those faces for LDD Manager to convert to the physical brick BrickLink counterpart.

Order parts from BrickLink

LDD manager allows you to upload a LDD model to BrickLink so you can order the parts. To use this feature you need an account at BrickLink (www.bricklink.com)

The upload process is divided into two steps:

Step 1

This steps involves creating a Wanted List at BrickLink. This is a 5 digit number (e.g. 56862). Write this number down for step two (or copy, Ctrl-C).

Step 2

1. In the Select window, select either to upload a single model, or a number of models in a “model group”. You can also choose a number of upload parameters that you can read more about at BrickLink. (Figure 3)
2. Click Continue to go on to a number of questions, one being what Wanted List to place the uploaded bricks in. Enter the number you created in step one (Ctrl-V). (Figure 1)
3. After this, follow the instructions on the screen and you will have all parts uploaded as a new Wanted List, ready for further manipulation or brick ordering.

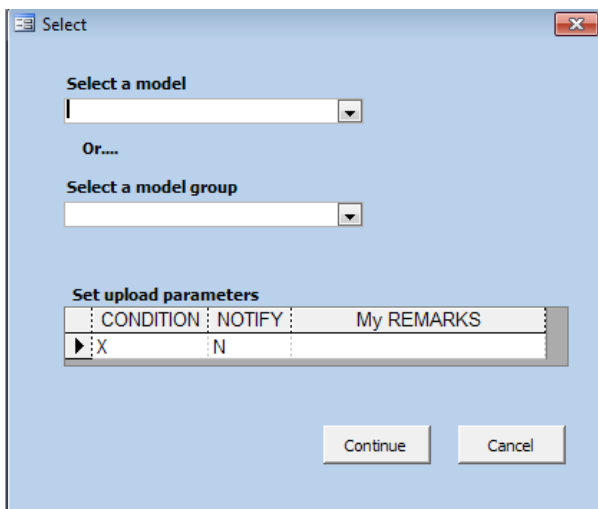


Figure 3 - Select Model and enter data

Generating an LXF file

Introduction

The Generate LXF-file window allows you to create a LXF-file from a list of parts. After creation, the file will automatically open in LDD.

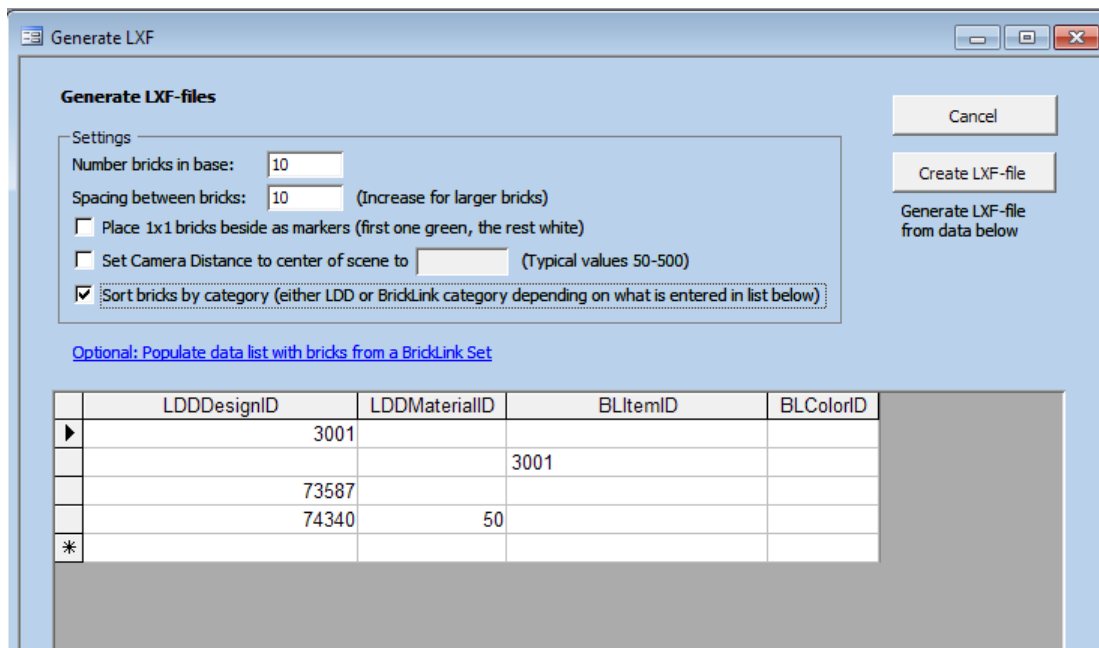


Figure 4 - Generate LXF-file screen

How the bricks are placed in the LDD file is controlled by a number of settings:

- ☐ **Number of bricks in base.** The number of columns of bricks you want. (the number of rows will then be determined by the number of bricks in the list)
- ☐ **Spacing between bricks.** The distance between the placed bricks. At the moment LDD Manager is kind of crude, and just places the bricks without regard to how big they are. This means that some very large bricks can be cramped, and you will get the “Some bricks are illegally placed and will be removed” error when opening the file in LDD. To avoid this, you can try to increase this number from 10 to 20.
- ☐ **Place 1x1 bricks as markers.** Just an option that places marker bricks to get some orientation of the bricks in the LDD file.
- ☐ **Set Camera distance.** I don’t know if this is a useful feature. It was the beginning of an idea to make stop-frame animations. Anyway, using the feature you can decide yourself decide the camera distance for a generated file (which is otherwise done automatically by LDD)
- ☐ **Sort Bricks.** Bricks will be sorted based on the LDD category number or the BrickLink category number, depending on what is entered in the list (LDD DesignID or BrickLink ID)

Generate LXF from a manually created part list

The generate LXF-file feature is quite flexible. You can chose to enter any combination of LDD or BrickLink part numbers and color ID's.

To paste in a list of parts from an Excel file or similar, do the following

1. Start by placing the list of numbers in Excel in the corresponding column as in LDD Manager. In this example we want to paste a list of BrickLink Items numbers. Make sure the BL numbers are in the same column as in LDD Manager. In this case the third column.
2. Select all four columns (Figure 5).
3. Switch over to LDD Manager
4. Click on the arrow button on the left so that the entire row is black (Figure 6)
5. Paste the data (Ctrl-V)
6. Done – you are now ready to generate the LXF-file (Figure 7)

To delete one or all rows from the list, click the arrow button field to the left of the list, (so that the row turns black), select the number of rows you want, and hit the Delete key.

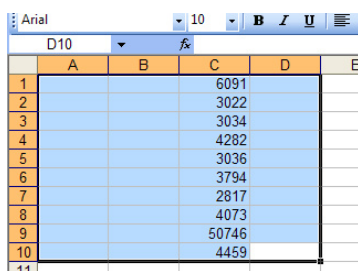


Figure 5 - Select all 4 columns

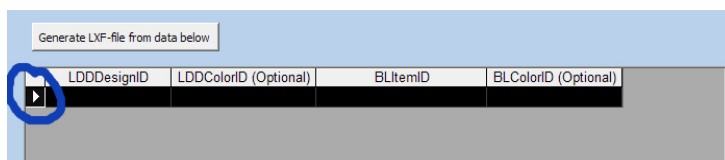


Figure 6 - Click to select entire row (turns black)

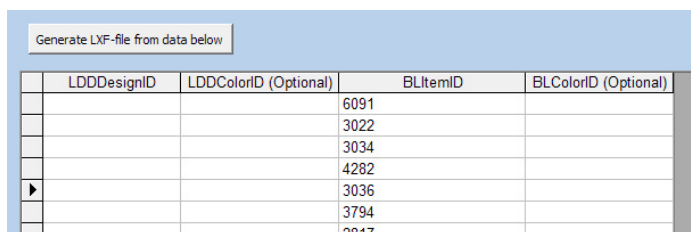


Figure 7 - List of bricks pasted in LDD Manager ready to be processed.

Generate LXF from a Brick Link part list

To generate an LXF file from a Brick Link part list, do as follows:

1. Click the blue “Populate date list with...” Link to open the “Input Set data from BL” window. The Input from BrickLink screen will open Figure 8
2. Go to www.bricklink.com and find the set for which you want to import the brick list. IMPORTANT – make sure you select the List view so that the part list is displayed WITHOUT images. (Figure 9)
3. Select (by dragging the mouse) the list of parts you want and then copy (Ctrl-C) (Figure 10)
4. Switch over to LDD Manager
5. Select the row so it become black (Figure 11)
6. Paste the data (Ctrl-V) (Figure 12)
7. Click the Go-button, which will parse through the data and extract the parts and colors.
8. Once the import is done, you are back to the Generate LXF windows and can now generate the LDD file.

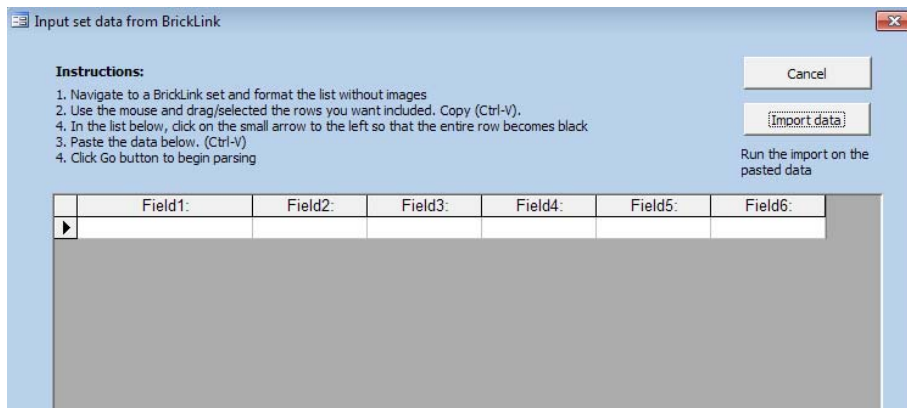


Figure 8 - Import BrickLink sets screen

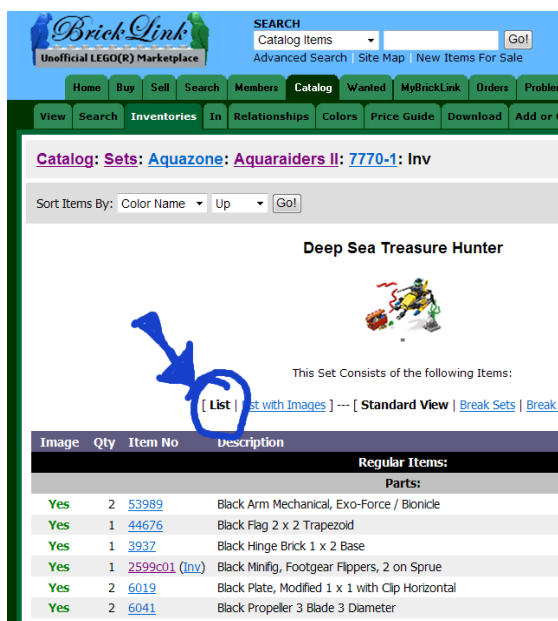


Figure 9 - IMPORTANT - you must switch to LIST view in BrickLink

[List | List with Images] --- [Standard View | Break Sets | Break

Image	Qty	Item No	Description
Regular Items:			
Parts:			
Yes	2	53989	Black Arm Mechanical, Exo-Force / Bionicle
Yes	1	44676	Black Flag 2 x 2 Trapezoid
Yes	1	3937	Black Hinge Brick 1 x 2 Base
Yes	1	2599c01 (Inv)	Black Minifig, Footgear Flippers, 2 on Sprue
Yes	2	6019	Black Plate, Modified 1 x 1 with Clip Horizontal
Yes	2	6041	Black Propeller 3 Blade 3 Diameter
Yes	2	32064b	Black Technic, Brick 1 x 2 with Axle hole (New Style with X Oper
Yes	1	3069bps2	Black Tile 1 x 2 with Avionics SW Copper, Red & Silver Pattern
Yes	1	3069b	Black Tile 1 x 2 with Groove
Yes	1	43723	Black Wedge, Plate 3 x 2 Left
Yes	1	43722	Black Wedge, Plate 3 x 2 Right
Yes	1	48183	Black Wedge, Plate 3 x 4 with Stud Notches
Yes	1	70501 (Inv)	Chrome Gold Minifig, Utensil Coins Complete Set on Sprue (10, 2
Yes	2	48729	Dark Bluish Gray Bar 1L with Clip Mechanical Claw
Yes	1	3004	Dark Bluish Gray Brick 1 x 2
Yes	2	30088	Dark Bluish Gray Minifig, Weapon Spear Gun
Yes	1	3031	Dark Bluish Gray Plate 4 x 4
Yes	1	3040	Dark Bluish Gray Slope 45 2 x 1
Yes	1	4460	Dark Bluish Gray Slope 75 2 x 1 x 3

Figure 10 - Select rows

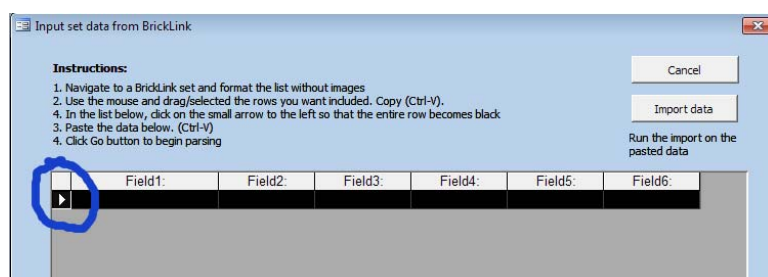


Figure 11 - Select entire row by clicking

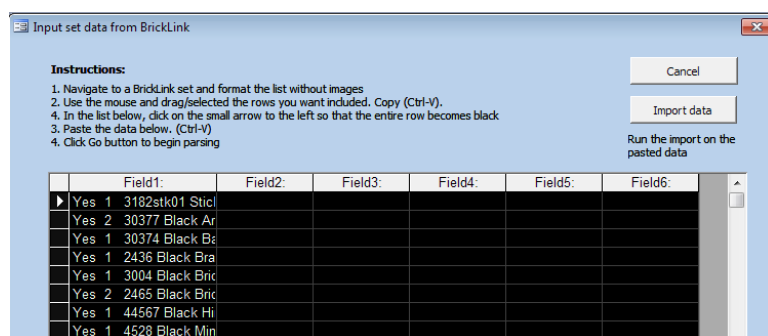


Figure 12 - Paste BrickLink data into LDD Manager (Ctrl-V)

Support for decorations and composite bricks

LDD Manager now supports BrickLink bricks with decorations that match those that are available in LDD. It also supports a few composite bricks when importing BrickLink lists, see Figure 13. Other composite bricks than these you need to manually add to the LDD model after import.

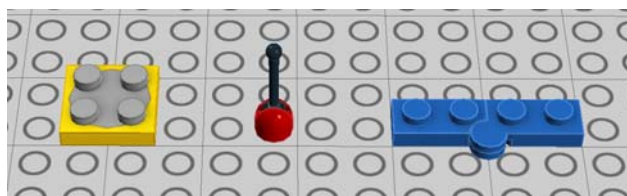


Figure 13 – These composites bricks are supported by LDD Manager when importing BrickLink sets.

LDD Brick and color lookup

The Brick Finder feature is actually kind of unique, since it allows you to find bricks based on not only part number etc, but also on brick attributes such as “has studs”, “has Technic hole” etc. This is a great feature when you have a brick in mind that you know what it looks like, but don’t know the part number.

The LDD Manager Brick Finder also allows you to see in which category a certain part is in LDD. Now that LDD has a built in part search functionality, this feature is not as useful as before, but I left it in LDD Manager even so.

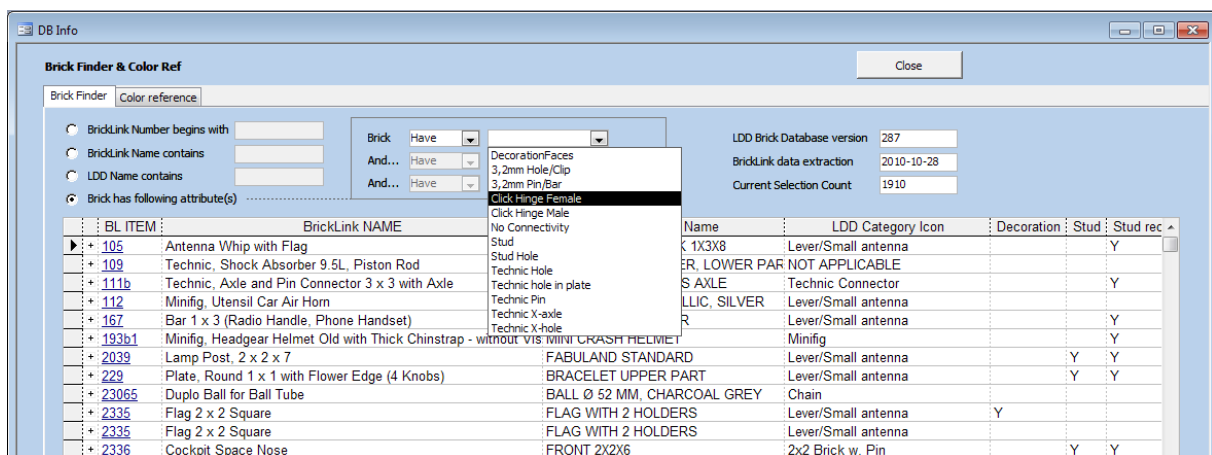


Figure 14 - Brick Finder tab

In the Color Reference tab you can view all the colors available in LDD and their corresponding BrickLink color. Clicking each row will show a small color swatch.

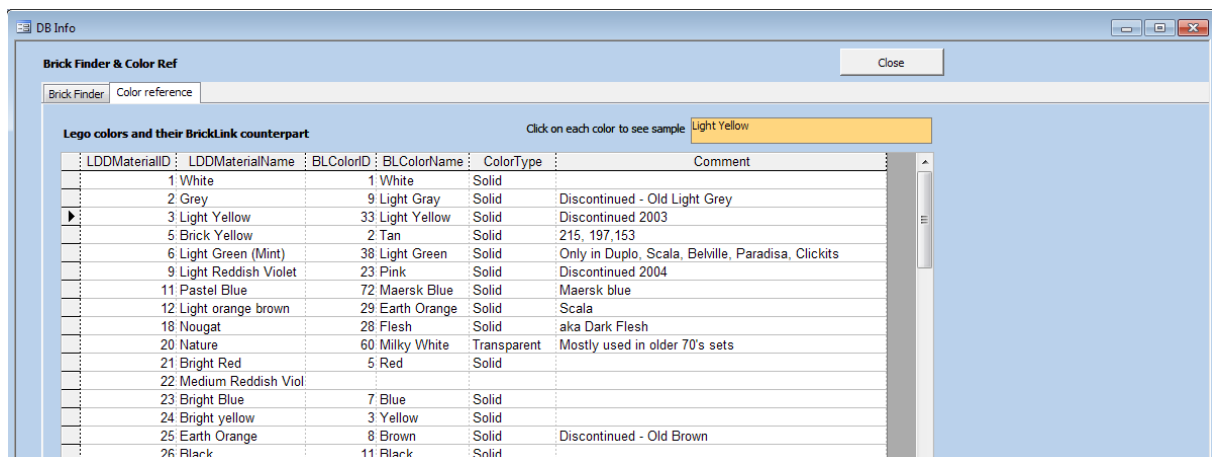


Figure 15 - Color Reference tab

Model commonality analysis

The model commonality analysis allows you to check which parts are common and unique for a number of models (use the model group feature). This feature has various uses. One could be when designing Creator type sets (build several models from one set of bricks). Instead of designing one model, and then trying to make up alternate models from those pieces, you can create three different models and then using Commonality Analyzer see which parts you'd need to add or remove to get as few remaining bricks as possible.

qCommonalityOverview : Crosstab Query											
BL ID	BL Name	BL Color	InNoOfMod	MaxInMod	MinInMod	SumMod	AvgMod	Stena Germanica	Stena SuperFerry	Stenafarja 1548_Li	
2626	Boat Bow Brick 6 x 6 x 1	White	1	2	2	2	2	2			
50303	Boat Bow Plate 7 x 6 with	White	1	1	1	1	1		1		
4289	Boat Mast 2 x 2 x 3 Inclir	White	2	1	1	2	1	1			1
3005	Brick 1 x 1	White	3	4	2	10	3,33333	2	4		4
6111	Brick 1 x 10	White	1	3	3	3	3		3		
2465	Brick 1 x 16	White	3	8	4	20	6,66667	4	8		8
3004	Brick 1 x 2	Red	1	2	2	2	2	2			
3004	Brick 1 x 2	White	2	5	2	7	3,5		5		2
3065	Brick 1 x 2 without Bottom	Black	1	1	1	1	1		1		
3622	Brick 1 x 3	Red	1	1	1	1	1		1		
3010	Brick 1 x 4	Red	1	1	1	1	1		1		
3010	Brick 1 x 4	White	1	3	3	3	3				3
3010	Brick 1 x 4	Yellow	1	1	1	1	1		1		
3009	Brick 1 x 6	Very Light Bluish Gray	2	3	2	5	2,5	3	2		
3009	Brick 1 x 6	White	2	3	2	5	2,5	3			2
3008	Brick 1 x 8	Light Bluish Gray	1	20	20	20	20				20
3008	Brick 1 x 8	Very Light Bluish Gray	2	20	14	34	17	20	14		
3008	Brick 1 x 8	White	1	4	4	4	4		4		
3006	Brick 2 x 10	White	2	3	2	5	2,5	3	2		
3003	Brick 2 x 2	White	2	3	1	4	2		1		3
3001	Brick 2 x 4	White	3	2	1	4	1,33333	1	1		2

Figure 16 - Model commonality overview

Compare models

Use this feature to compare two models with respect to only brick content, or brick content and color. Use it as follows:

1. In the Model window (Figure 17), find the Model number for the two models you want to compare.
2. Run the Compare Models feature. Enter the Model ID for the first and second model respectively. (Figure 18)
3. The result is presented in a table format (Figure 19), where you can see which parts where unique to the first and second model. If you want to visualize the parts, you can always copy the part list, and create a LXF-file using the LXF-Generator.

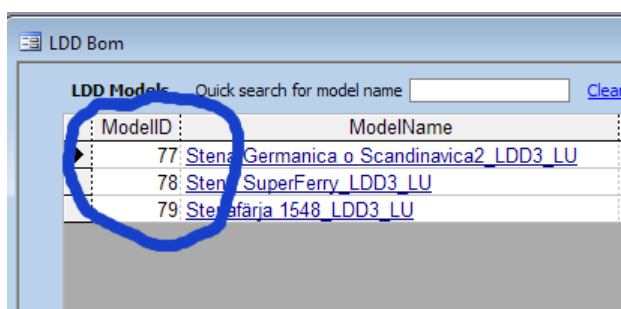


Figure 17 - Make not of the two models you wish to compare

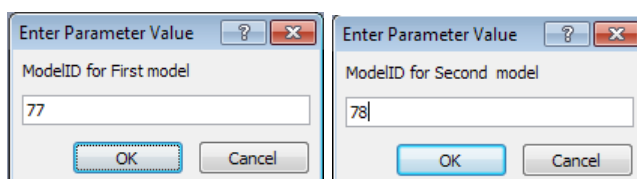


Figure 18 - Enter ID for first model and second model

	FirstModelID	SecondModelID	LDDDesignID	LDDDesignName	LDDMaterialID	LDDMaterialName	
	77		6636	FLAT TILE 1X6	23	Bright Blue	Tile 1
	77		30586	PLATE 2X8 W/GLIDING GRO	1	White	Plate
	77		32474	VOODOO BALL Ø10,2	1	White	Tech
	77		50746	ROOF TILE 1X1X2/3, PC	23	Bright Blue	Slop
	77		51739	PLATE 2X4X18°	1	White	Wed
	77		60479	PLATE 1X12	1	White	Plate
	77		60479	PLATE 1X12	21	Bright Red	Plate
		78	2420	CORNER PLATE 1X2X2	26	Black	Plate
		78	2877	PROFILE BRICK 1X2	21	Bright Red	Brick
		78	3003	BRICK 2X2	1	White	Brick
		78	3004	BRICK 1X2	1	White	Brick
		78	3008	BRICK 1X8	1	White	Brick
		78	3010	BRICK 1X4	21	Bright Red	Brick

Figure 19 - Result window for comparing two models

Batch replace or delete parts

The batch replace parts function allows you to open one or multiple LXF-files and replace a certain parts with another.

Here is list of the values/criteria combinations that are valid.

When "Replace Bricks" option is used:

OriginalDesignID	ReplaceWithDesignID	OriginalLDDColor	ReplaceWithColor	Explanation
3005	3001			Replaces all 3005 with 3001 regardless of color
3005	3001	1		Replace all white 3005 with (white) 3001
3005	3001	1	24	Replace all white 3005 with yellow 3001

When "Delete Bricks" option is used:

OriginalDesignID	ReplaceWithDesignID	OriginalLDDColor	ReplaceWithColor	Explanation
3005				Delete all 3005 bricks
3005		1		Delete all white 3005 bricks

All files with replaced parts will be created as a new file. The original file will remain unchanged.

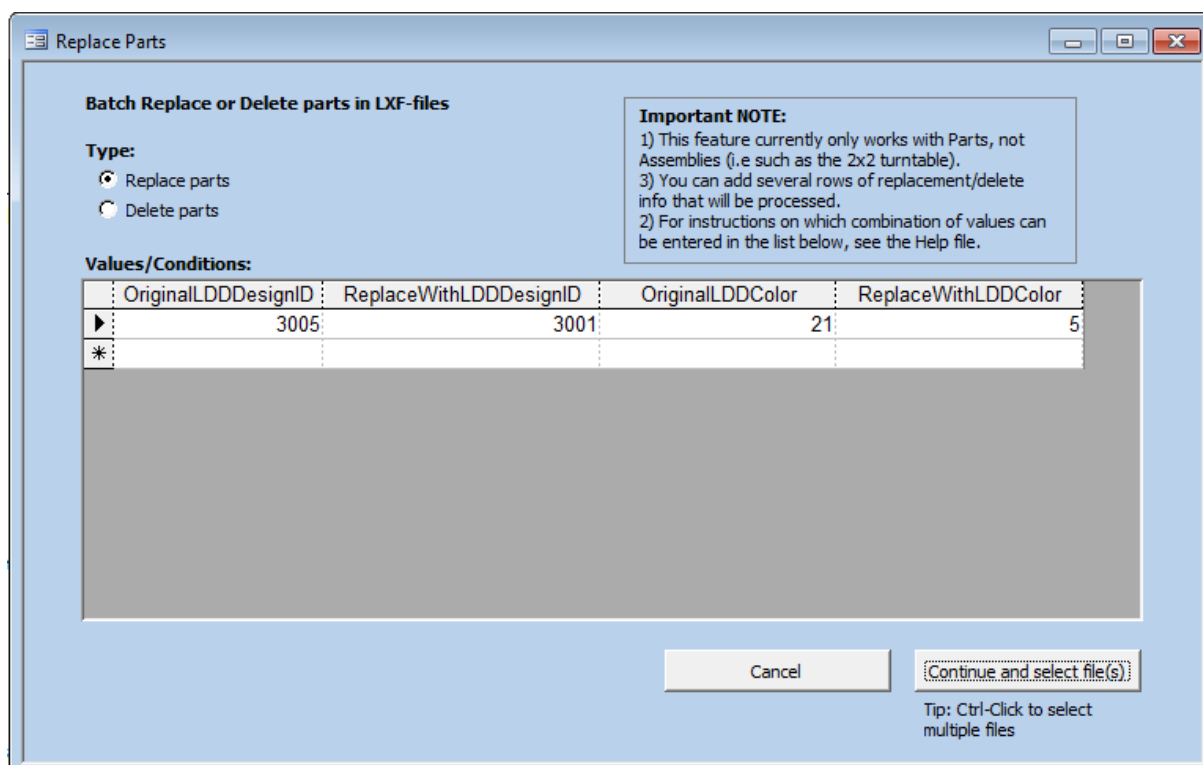
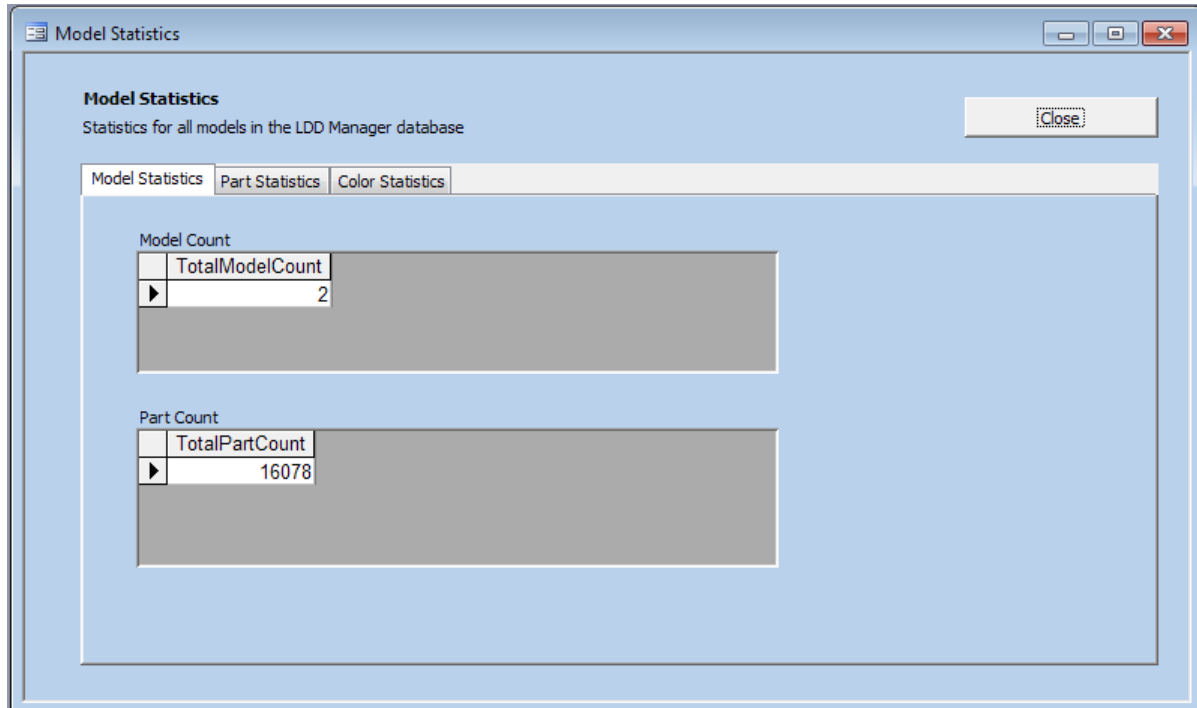


Figure 20 - Batch replace part screen

Statistics for all models

This feature allows you to view statistics and part content for all the LXF-files you have in LDD Manager.



Release history

0.93 Beta

- ☐ New feature: Support added for all new bricks in LDD 4.0, brickset version 287
- ☐ New feature: Import BrickLink set list
- ☐ New feature: Batch replace parts in LXF-files (e.g. particularly parts that were removed from LDD3 but had exact counterparts in LDD 4)

0.94 Beta

- ☐ New feature: support for decorations, both Import from LDD and Import from BrickLink
- ☐ New feature: possible to generate LXF-files and get certain composite part when importing part lists from BrickLink:
 - 2x2 turn table
 - 1x2 + 1x2 hinge plate
 - Lever (mini antenna)
 - Technic Joint 3L
- ☐ Bug fix: fixed incorrect Icon description in the Parts & Color reference
- ☐ Bug fix: now possible to paste BrickLink sets also from other browsers than IE
- ☐ Bug fix: fixed some minor errors in the BrickLink to LDD parts table
- ☐ Bug fix: added support for Power Functions elements with the following BrickLink ID's: 55206c01, 58120c01, 58123c01, 58122c01, 58121c01, 54950c02. NOTE: Mindstorms sensors and motor not yet added.

0.95 Beta

- ☐ Bug fix: fixed an error in which 1x2 bricks imported from BrickLink sets would get a clock decoration

0.96 Beta

New features

- ☐ View Model Statistics for all your imported models
- ☐ DbM field will show if a brick is a Pick-A-Brick/DesignByMe brick.
- ☐ ElementID will now be shown if that information is available. LDD Manager will show the official DesignByMe ElementID and if that is not available, it will use the BrickLink PartNo-field.

Updates

- ☐ Updated the LDD 3.0 to 4.0 substitute bricks lookup table after new info from TLG
- ☐ Added support for Mindstorms elements
- ☐ Increased the number of files that can be imported simultaneously
- ☐ Now shows user a hour-glass when large files are being loaded
- ☐ Updated the KnownColor and ElementID reference tables from BrickLink with latest data February 2011.

Bug fixes

- ☐ Now only shows HasDecoration if the part has a decoration added, not if it supports decoration.
- ☐ Model with apostrophe in file name can now be imported correctly
- ☐ Handle file that has LXF extension but is not LXF.
- ☐ Can now export BrickLink WantedList also in Access 2010 (only for 32-bit version – 64-bit still not supported)
- ☐ Standard Technic pin in black is no longer shown as “Check if color exist”
- ☐ Will now warn user if LDD Manager database is read-only.

0.97 beta

New features

- ☐ Now possible to filter out to only view brick issues. Brick issues are defined as
 - There is a color warning for that part OR....
 - There is a missing ElementID for that part
- ☐ When importing files, the last imported file is now selected in the Model list.

Updates

- ☐ Considerable performance improvement when viewing very large files
- ☐ Full support for LDD 4.1
 - New decorations added (thanks to Aanchir)
 - New DbM palette
 - LDD Extended Mode
 - Brick Database version 372.1
- ☐ Updated the reference data from BrickLink (Items and colors) with latest data. A few small errors in the LDD to BrickLink mapping was also fixed.
- ☐ The color warning feature has been upgraded to show two levels of warnings.
 - “Check if exist” warning when Lots for Sale is less then 5.
 - “Possibly rare” warning when Lots for Sale is between 5 and 15.

NOTE: at the moment, Minifig leg decorations are not supported. I have to look into that some more.

0.98

New features

- ☐ Added a button to re-import all your LDD files in one go.

Bug fixes

- ☐ Hero Factory parts missed out in the Find Bricks feature....

Updates

- ☐ Updated database to support LDD 4.1.8
- ☐ Updated database with latest BrickLink info.

0.99

New features/changes

- ☐ Color substitution analysis is a new tab
- ☐ “Does a similar part exist”-info in main list
- ☐ Changed “color warning” setup.
- ☐ Removed the DbM column and other references to DbM
- ☐ Added possibility to use color as criteria when batch replacing or deleting bricks from LXF-file
- ☐ Added Model statistics

Bug fixes

- ☐ N/A

Updates

- ☐ Updated database to support the new bricks in LDD 4.2.5 (and that were available in the BL database)
- ☐ Updated database with latest BrickLink info January 2012.